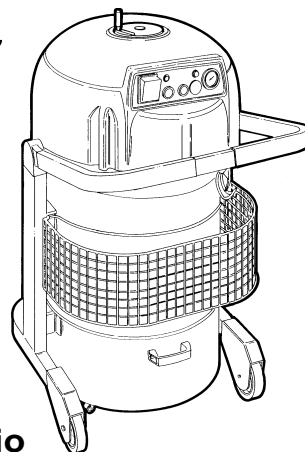


127



Catalogo parti di ricambio
Catalogue des pieces de rechange
Ersatzteilkatalog
Spare parts catalogue
Catalogo de piezas de repuesto

**NORME PER LE ORDINA-
ZIONI
DEI PEZZI DI RICAMBIO**

Le ordinazioni dei ricambi devono essere corredate dalle seguenti indicazioni:

- A) *Modello della macchina;*
- B) *Numero di matricola;*
- C) *Numero di identificazione del ricambio richiesto;*
- D) *Quantità richiesta;*
- E) *Denominazione.*

**POUR COMMANDER LES
PIECES DETACHEES**

Donner toujours les indications suivantes:

- A) *Type de la machine;*
- B) *Numéro de serie;*
- C) *Code de la pièce;*
- D) *Quantité demandée;*
- E) *Dénomination de la pièce.*

BESTELLWEG

Ersatzteilebestellungen müssen mit den folgenden Angaben ausgestattet werden:

- A) *Maschinentyp;*
- B) *Fabriknummer;*
- C) *Teilkennzeichen;*
- D) *Menge je Teil*
- E) *Teilbenennung.*

**HOW TO ORDER SPARE
PARTS**

Any order for spare parts should be completed with the following datas:

- A) *Machine model;*
- B) *Serial number*
- C) *Identification code number of the part required ;*
- D) *Quantity required;*
- E) *Part denomination.*

**NORMAS PARA HACER UN
PEDIDO**

En todos los pedidos debe indicarse los siguientes datos:

- A) *Modelo de la máquina;*
- B) *Numero de la matricula;*
- C) *Numero de codigo;*
- D) *Cantidad pedida;*
- E) *Denominacion.*



INFORMAZIONI GENERALI - INFORMATIONS GENERALS - GENERAL AUSKUNFT
GENERAL INFORMATION - INFORMACIONES GENERALES

Le istruzioni, i disegni, le tabelle e quant'altro è contenuto nel presente fascicolo sono di natura tecnica riservata e, per questo, ogni informazione non può essere riprodotta, nè completamente nè parzialmente, e non può essere comunicata a terzi senza l'autorizzazione scritta della **CFM S.p.A.** che ne è la proprietaria esclusiva e che si riserva il diritto di apportare senza preavviso tutte quelle modifiche che riterrà opportune.

CFM S.p.A.

Die Anweisungen, Abbildungen, Tabellen und alle weiteren Angaben in diesem Handbuch sind vertrauliche Angaben technischer Natur. Aus diesem Grunde dürfen sie wieder vollständig noch teilweise kopiert werden bzw. ohne Erlaubnis der **CFM S.p.A.** Dritten zugänglich gemacht werden. CFM selbst ist alleiniger Urheber und behält sich das Recht vor, ohne Vorankündigung alle Abänderungen durchzuführen, die sie für richtig erachtet.

CFM S.p.A.

*All instruction, drawing, tables and any other information herein contained, are to be considered herein contained, are to be considered as confidential technical descriptions. Therefore, no information nor data shall be reproduced neither entirely nor partially and no information may be passed to third parties without written authorization by **CFM S.p.A.** who is the sole proprietor of it and who reserves the right of any modification, that are considered suitable, without, prior notice.*

CFM S.p.A.

Les instructions, les dessins, les plans et toutes autres informations contenues dans ce livret sont des données techniques réservées. Pour cela aucune information ne peut être reproduite ni entièrement ni partiellement et ne peut être communiquée à tiers sans autorisation écrite de la **CFM S.p.A.** qui en est la propriétaire exclusive. Celle-ci se réserve aussi le droit d'effectuer sans avis préalable toutes les modifications qu'elle estimera nécessaires.

CFM S.p.A.

*Las instrucciones, los dibujos, las tablas y demás que se encuentran en el presente folleto son de naturaleza técnica reservada y, por tanto, las informaciones no pueden ser reproducidas ni en su totalidad ni en parte y no pueden ser comunicadas a terceros sin la autorización escrita de **CFM S.p.A.** que es la propietaria exclusiva y que se reserva el derecho de hacer las modificaciones que considere oportunas sin aviso anticipado.*

CFM S.p.A.

TAV. 1.1

TELAIO
CHASSIS
RAHMEN
FRAME
ESTRUCTURA

TAV. 2.1

GRUPPO CONTENITORE
GROUPE CONTENEUR
BEHALTERGRUPPE
CONTAINER UNIT
GRUPO CONTENEDOR

TAV. 3.1

GRUPPO ASPIRAZIONE
GROUPE ASPIRATION
SAUGERGRUPPE
SUCTION UNIT
GRUPO ASPIRACION

TAV. 4.1

QUADRO COMANDO
TABLEAU DE COMMANDE
SCHALTTAFEL
CONTROL PANEL
PANEL MANDO

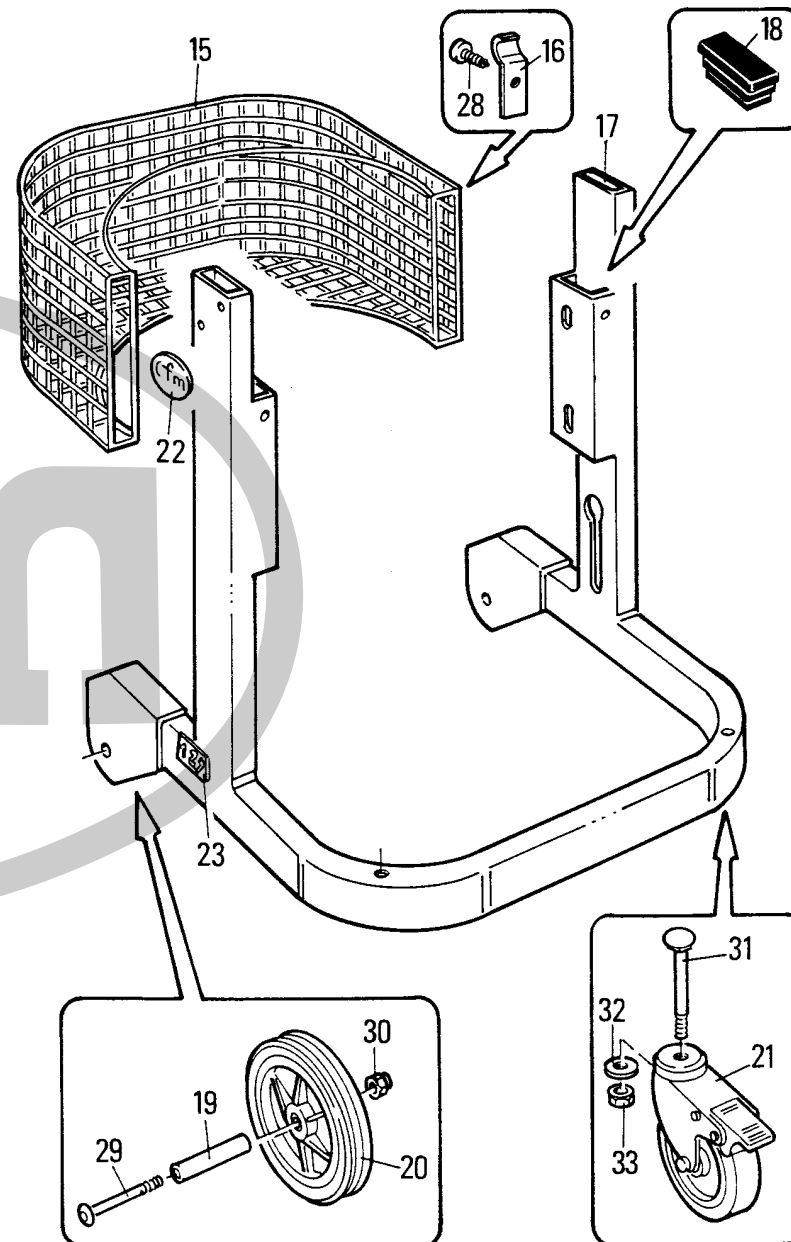
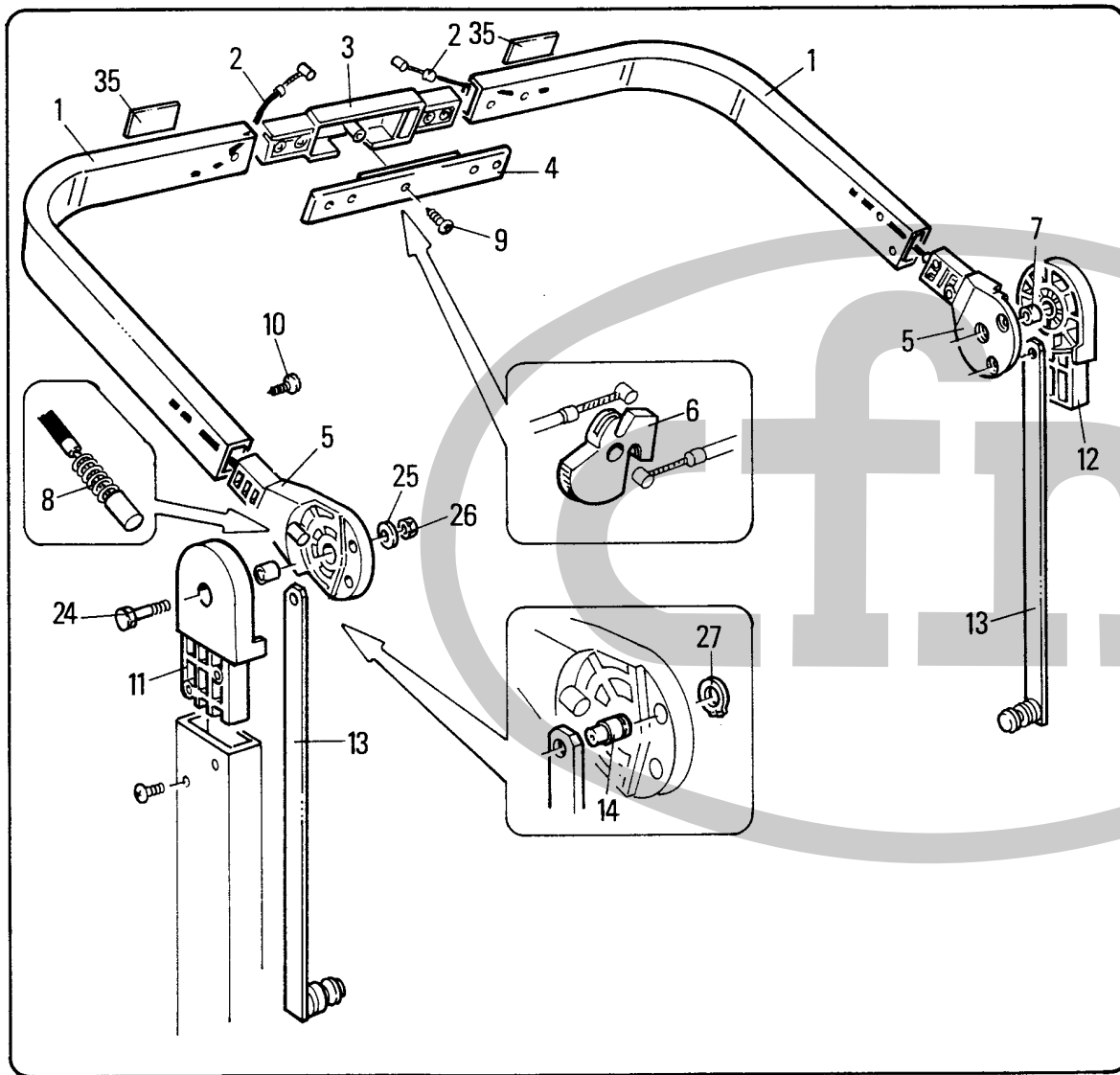
TAV. 5.0

GRUPPO FILTRO
ENSEMBLE FILTRE
FILTEREINHEIT
FILTER GROUP
GRUPO FILTRO

TAV. 8.0

FILTRO ASSOLUTO
FILTRE ABSOLU
ABSOLUTER FILTER
ABSOLUTE FILTER
FILTRO ABSOLUTO

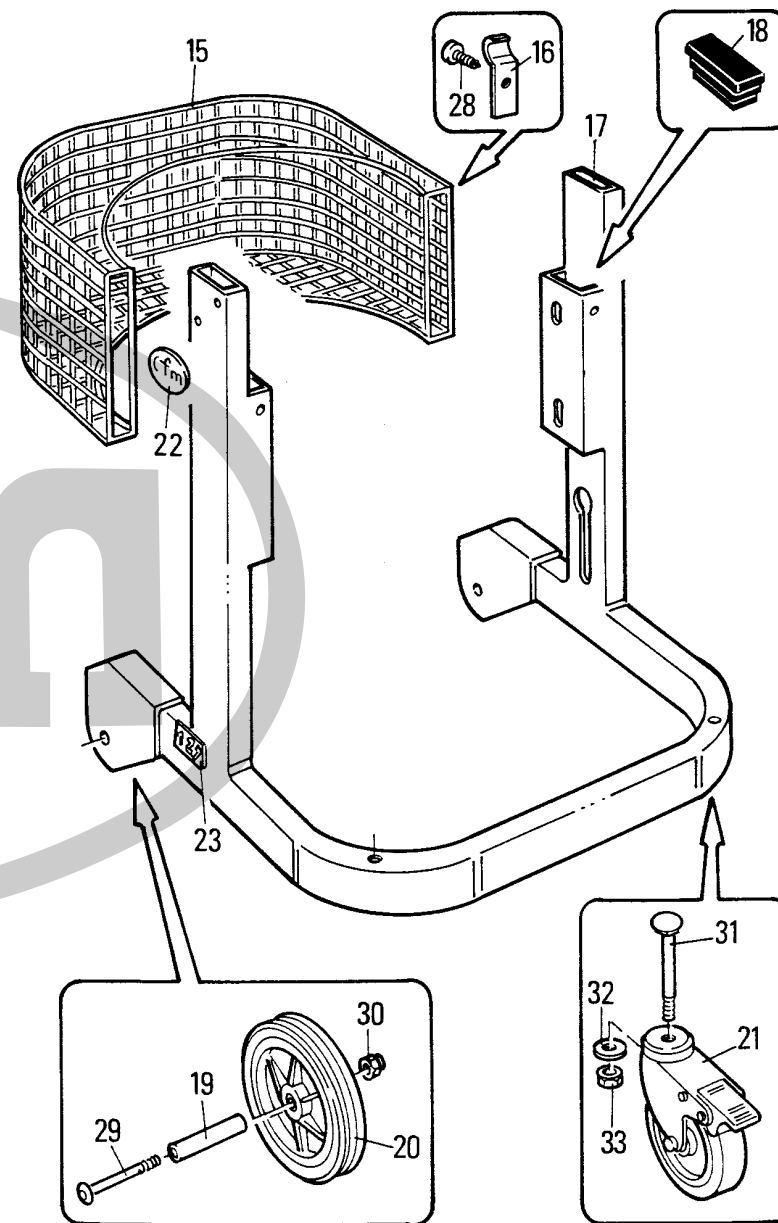
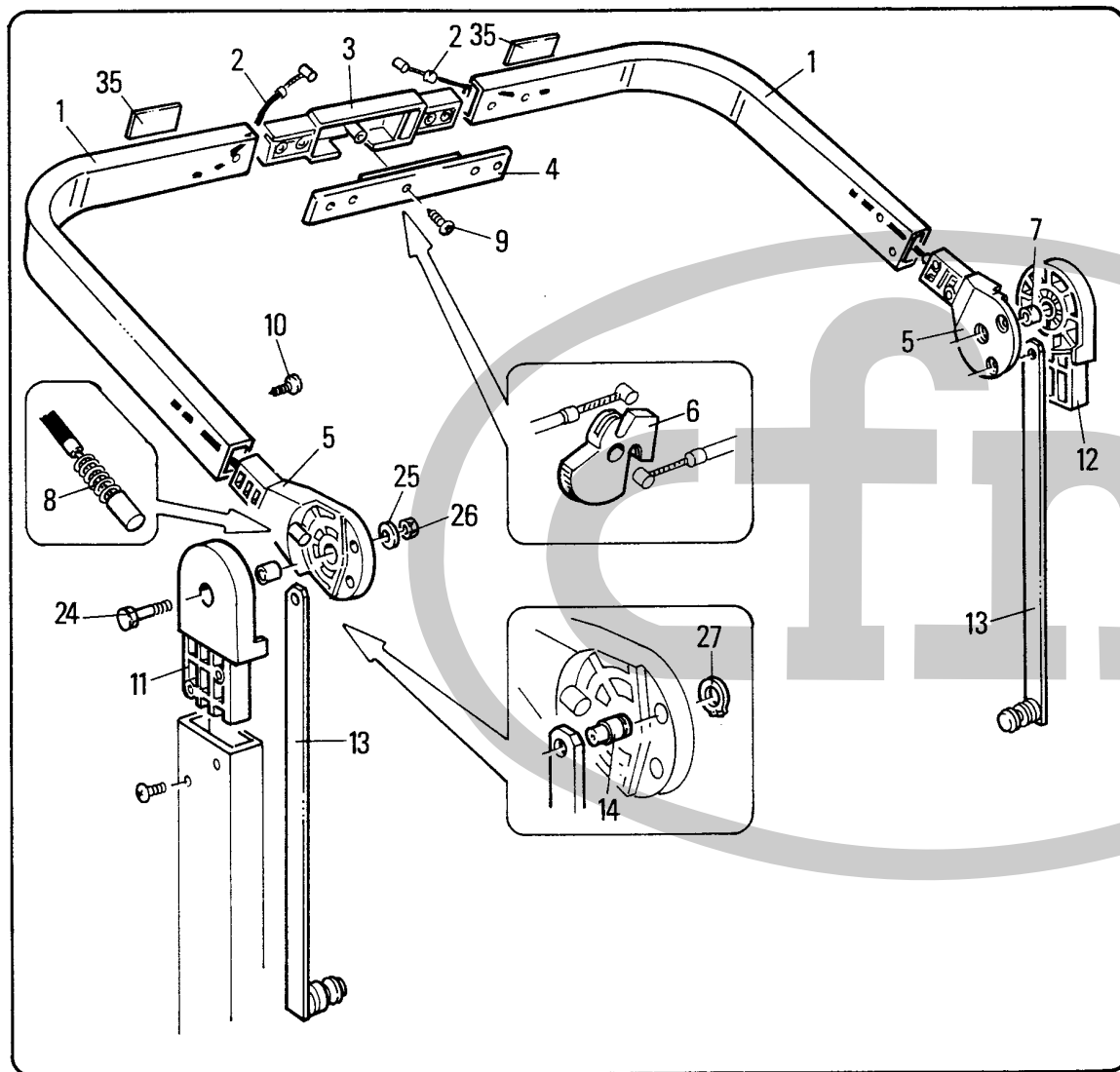


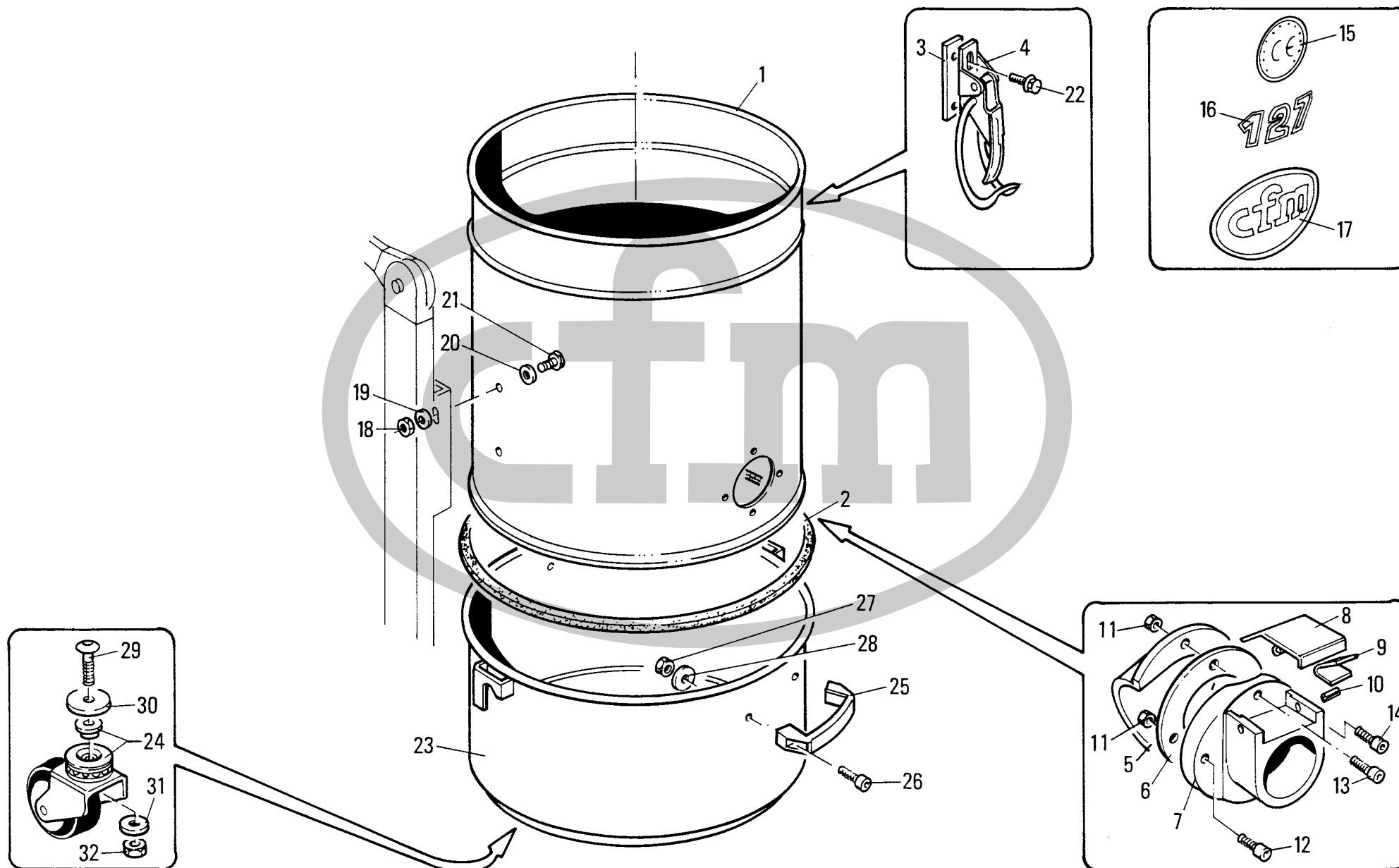


Mod. 127

TAV. 1.1

| POS. | N°CODICE | Q | DESCRIZIONE | DESIGNATION | BENENNUNG | DESCRIPTION | DENOMINACIONES |
|------|-----------|---|---------------|--------------|------------|--------------|---------------------|
| 1 | 8 18512 | 2 | IMPUGNATURA | POIGNEE | GRIFF | HANDGRIP | EMPUNADURA |
| 2 | 8 40398 | 2 | GUAINA | GAINÉ | SCHUTZROHR | SHEATH | FUNDA |
| 3 | 8 18514 | 1 | CORPO | CORPS | GEHAEUSE | BODY | CUERPO |
| 4 | 8 18515 | 1 | COPERCHIO | COUVERCLE | DECKEL | COVER | TAPA |
| 5 | 8 18504 | 2 | SNODO | ARTICULATION | GELENK | ARTICULATION | ARTICULACION |
| 6 | 8 18503 | 1 | PULSANTE | VERROU | DRUCKKNOPF | PUSH BOTTON | PULSADOR |
| 7 | 8 38032 | 2 | BOCCOLA | DOUILLE | BUECHSE | BUSHING | CASQUILLO |
| 8 | 8 14268 | 2 | MOLLA | RESSORT | FEDER | SPRING | MUELLE |
| 9 | | 5 | VITE 4,8 x 15 | VIS | SCHRAUBE | SCREW | TORNILLO |
| 10 | | 4 | VITE 4,8 x 15 | VIS | SCHRAUBE | SCREW | TORNILLO |
| 11 | 8 18505/D | 1 | GIUNTO DX | COUPLER | GELENK | COUPLING | ACOPLAMIENTO, JUNTA |
| 12 | 8 18505/S | 1 | GIUNTO SX | COUPLER | GELENK | COUPLING | ACOPLAMIENTO, JUNTA |
| 13 | 8 34021 | 2 | TIRANTE | TIRANT | STANGE | TIEROD | TIRANTE |
| 14 | 8 14264 | 2 | PERNO | AXE | BOLZEN | PIN | PERNO |
| 15 | 8 16176 | 1 | CESTELLO | PANIER | KORB | BASKET | CABINA DEL OPERADOR |
| 16 | 8 18011 | 2 | PIASTRINA | PLAQUETTE | PLAETTCHEN | PLAQUE | CHAPITA |
| 17 | 8 36195 | 1 | CARRELLO | CHARIOT | WAGEN | CAR | VAGONETA |
| 18 | 8 40397 | 2 | TAPPO | BOUCHON | STOPFEN | PLUG | TAPON |
| 19 | 8 14257 | 2 | BOCCOLA | DOUILLE | BUECHSE | BUSHING | CASQUILLO |
| 20 | 8 40394 | 2 | RUOTA | ROUE | RAD | WHEEL | RUEDA |
| 21 | 8 40395 | 2 | RUOTA | ROUE | RAD | WHEEL | RUEDA |
| 22 | 8 17339 | 2 | ADESIVO | DECALCOMANIE | ABZIEHBILD | LABEL | ADHESIVO |
| 23 | 8 17344 | 2 | ADESIVO | DECALCOMANIE | ABZIEHBILD | LABEL | ADHESIVO |
| 24 | | 2 | VITE M8 x 35 | VIS | SCHRAUBE | SCREW | TORNILLO |
| 25 | | 2 | RONDELLA Ø 8 | RONDELLE | SCHEIBE | WASHER | ARANDELA |
| 26 | | 2 | DADO M8 BLOCK | ECROU | MUTTER | NUT | TUERCA |

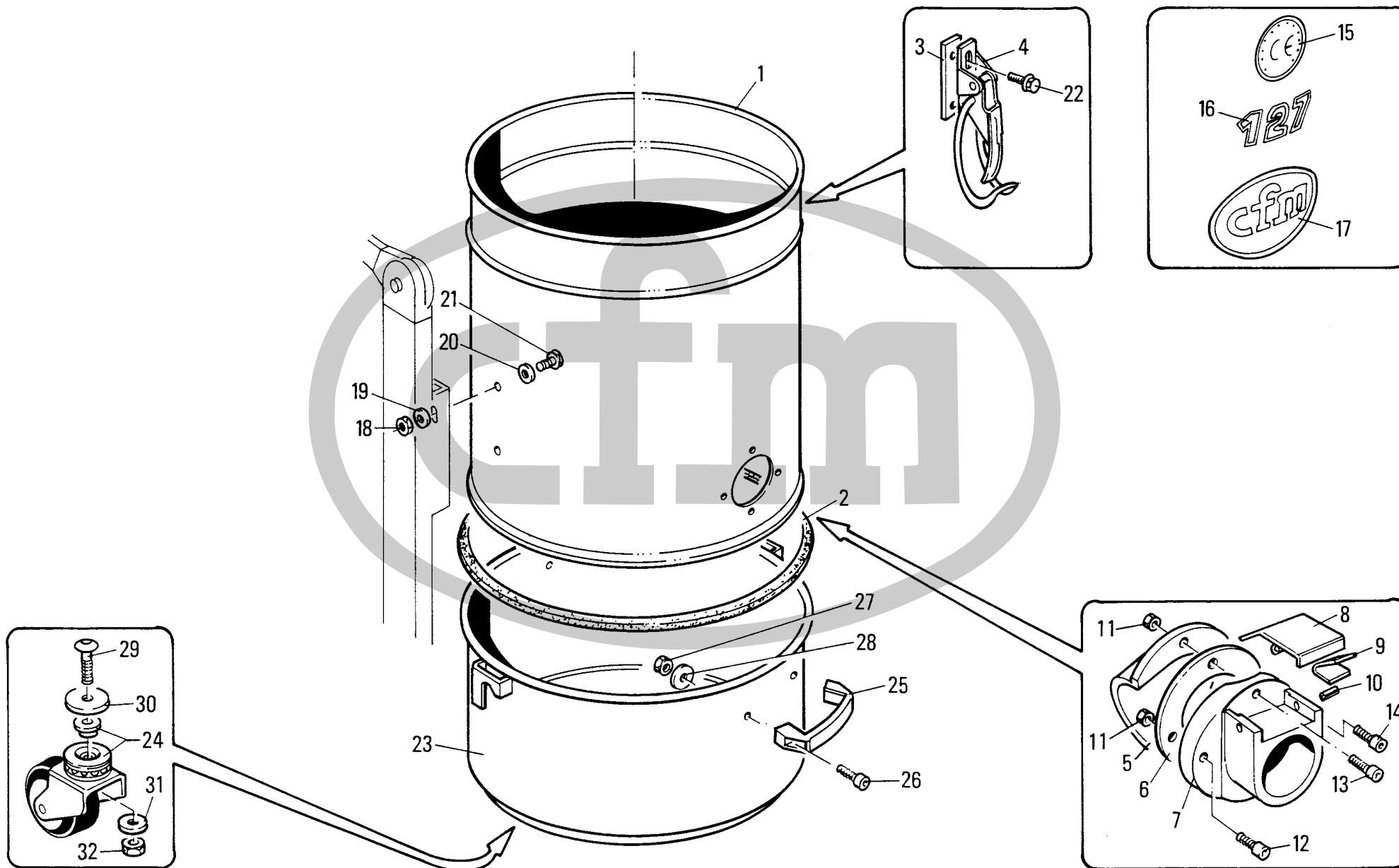


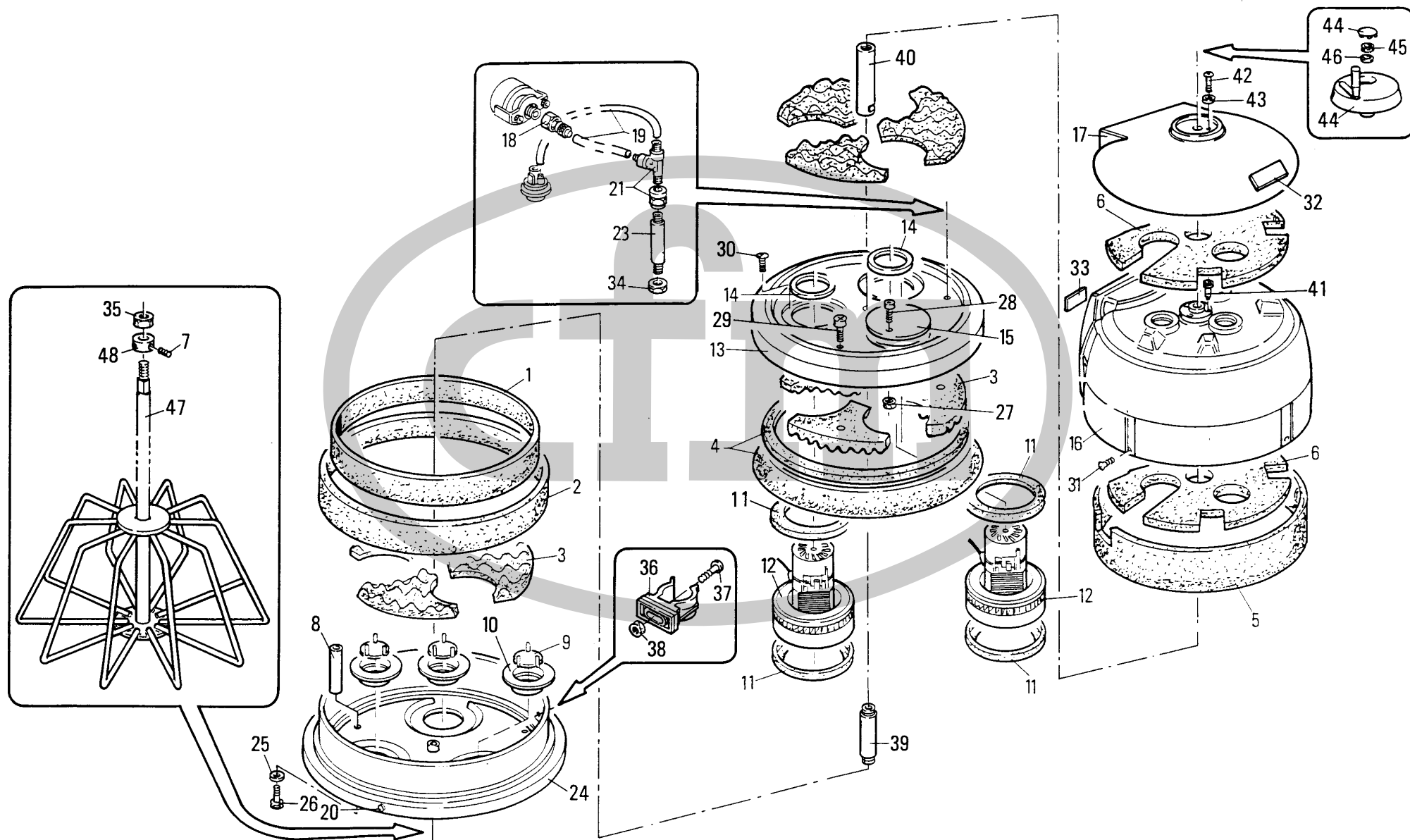


Mod. 127

TAV. 2.1

| POS. | N°CODICE | Q | DESCRIZIONE | DESIGNATION | BENENNUNG | DESCRIPTION | DENOMINACIONES |
|------|----------|--------|-------------------|--------------|-----------------|-------------|-----------------|
| 1 | 8 11083 | 1 | CONTENITORE | CHAMBRE | BEHAELTER | CONTAINER | CONTENER |
| 2 | 8 17007 | Mt.1,5 | GUARNIZIONE | JOINT | DICHTUNG | SEAL | JUNTA |
| 3 | 8 18010 | 2 | PIASTRINA | PLAQUETTE | PLAETTCHEN | PLAQUE | CHAPITA |
| 4 | 8 36028 | 2 | CHIUSURA | COLLIER | VERSCHLUSS | LOCK | CIERRE |
| 5 | 8 12013 | 1 | DEFLETTORE | DEFLECTEUR | LEITBLECH | DEFLECTOR | DEFLECTOR |
| 6 | 8 17006 | 1 | GUARNIZIONE | JOINT | DICHTUNG | SEAL | JUNTA |
| 7 | 8 13002 | 1 | BOCCHETTONE | EMBOUCHURE | EINFUELLSTUTZEN | FILLER | BOCA ASPIRACION |
| 8 | 8 32011 | 1 | PULSANTE | VERROU | DRUCKKNOPF | PUSH BOTTON | PULSADOR |
| 9 | 8 13010 | 2 | MOLLA | RESSORT | FEDER | SPRING | MUELLE |
| 10 | 8 38020 | 2 | SPINA Ø 3 x 16 | GOUPILLE | STIFT | PIN | PASADOR |
| 11 | | 4 | DADO M5 | ECROU | MUTTER | NUT | TUERCA |
| 12 | | 1 | VITE M5 x 20 | VIS | SCHRAUBE | SCREW | TORNILLO |
| 13 | | 2 | VITE M5 x 25 | VIS | SCHRAUBE | SCREW | TORNILLO |
| 14 | | 1 | VITE M5 x 30 | VIS | SCHRAUBE | SCREW | TORNILLO |
| 15 | 8 17349 | 1 | ADESIVO | DECALCOMANIE | ABZIEHBILD | LABEL | ADHESIVO |
| 16 | 8 17343 | 1 | ADESIVO | DECALCOMANIE | ABZIEHBILD | LABEL | ADHESIVO |
| 17 | 8 17340 | 1 | ADESIVO | DECALCOMANIE | ABZIEHBILD | LABEL | ADHESIVO |
| 18 | | 4 | DADO M8 | ECROU | MUTTER | NUT | TUERCA |
| 19 | | 4 | RONDELLA Ø 8 | RONDELLE | SCHEIBE | WASHER | ARANDELA |
| 20 | | 4 | RONDELLA Ø 8 x 32 | RONDELLE | SCHEIBE | WASHER | ARANDELA |
| 21 | | 4 | VITE M8 x 20 | VIS | SCHRAUBE | SCREW | TORNILLO |
| 22 | | 4 | VITE M6 x 8 | VIS | SCHRAUBE | SCREW | TORNILLO |
| 23 | 8 30164 | 1 | CONTENITORE | CHAMBRE | BEHAELTER | CONTAINER | CONTENER |
| 24 | 8 40402 | 3 | RUOTA | ROUE | RAD | WHEEL | RUEDA |
| 25 | 8 40038 | 2 | MANIGLIA | POIGNEE | GRIFF | HANDLE | MANILLA |
| 26 | | 4 | VITE M8 x 16 | VIS | SCHRAUBE | SCREW | TORNILLO |

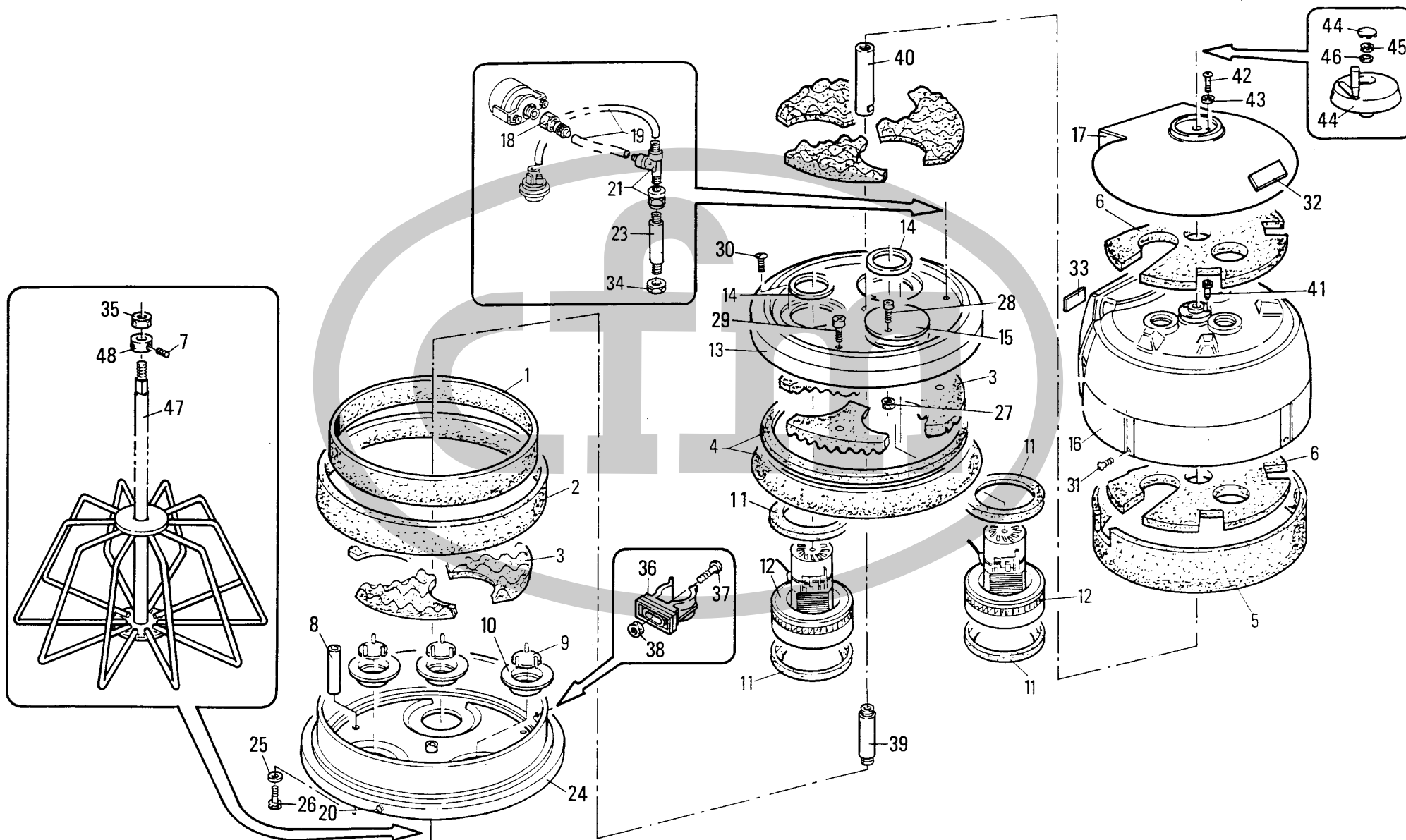


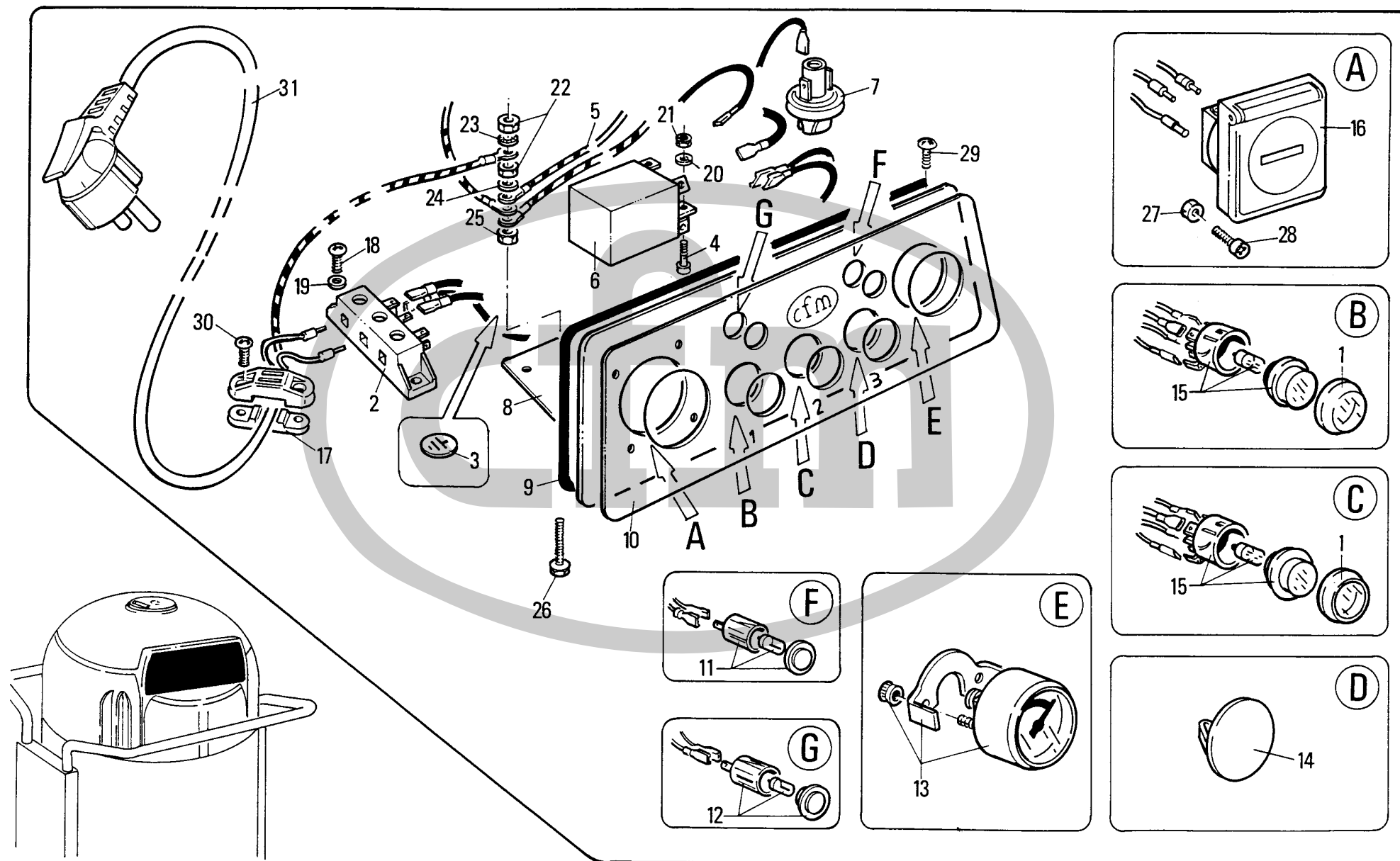


Mod. 127

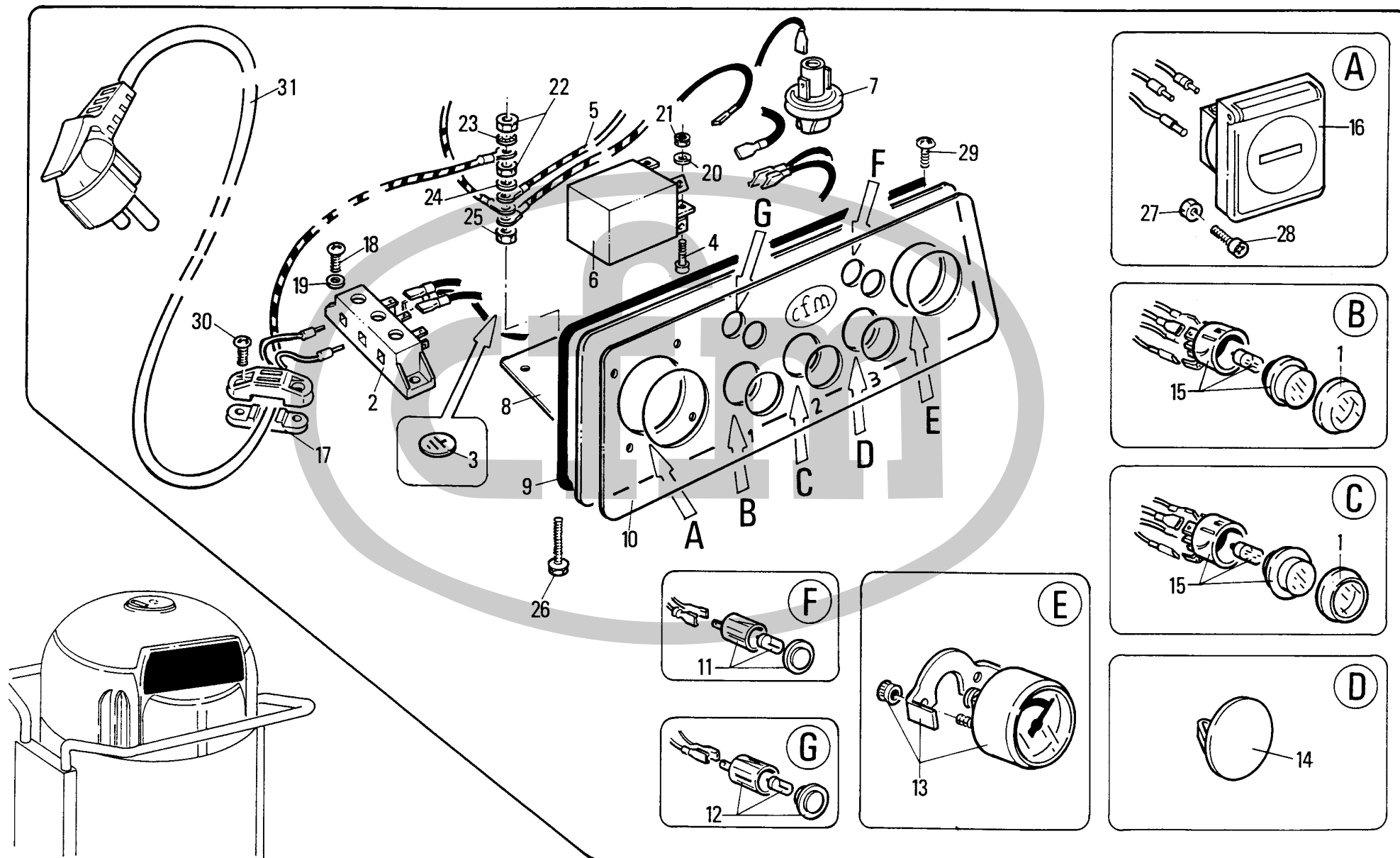
TAV. 3.1

| POS. | N°CODICE | Q | DESCRIZIONE | DESIGNATION | BENENNUNG | DESCRIPTION | DENOMINACIONES |
|------|----------|---------|--------------------|--------------------|----------------------|---------------------|--------------------|
| 1/6 | 8 17324 | 1 | KIT INSONORIZZANTE | KIT INSONORISANT | SCHALLSCHLUCKUNGSATZ | SOUNDPROOFING KIT | KIT INSONORIZACION |
| 7 | | 2 | GRANO M6 x 10 | GRAIN DE CENTRIAGE | PASSTIFT | DOWEL | PITON |
| 8 | 8 14270 | 2 | DISTANZIALE | ENTRETOISE | DISTANZSTUECK | SPACER | ESPACIADOR |
| 9 | 8 12168 | 2 | VALVOLA | SOUPAPE | VENTIL | VALVE | VALVULA |
| 10 | 8 13162 | 2 | CAPPELLOTTO | BOUCHON | ABSCHLUSSKAPPE | CAP NUT | CAPUCHON |
| 11 | 8 17325 | 4 | GUARNIZIONE | JOINT | DICHTUNG | SEAL | JUNTA |
| 12 | 8 54002 | 2 | MOTORE | MOTEUR | MOTOR | ENGINE | MOTOR |
| 13 | 8 16179 | 1 | FISSA MOTORE | FIXE-MOTEUR | MOTORFIXIERER | MOTOR FIXING DEVICE | FIJACION MOTOR |
| 14 | 8 17326 | 2 | GUARNIZIONE | JOINT | DICHTUNG | SEAL | JUNTA |
| 15 | 8 16187 | 1 | FONDELLO | BOUT | BODENTELLER | BOTTOM | TAPA |
| 16 | 8 16243 | 1 | COPRI MOTORE | COUVRE-MOTEUR | MOTOR DECKEL | ENGINE COVER | CUBRE-MOTOR |
| 17 | 8 16244 | 1 | COPERCHIO | COUVERCLE | DECKEL | COVER | TAPA |
| 18 | 8 40401 | 1 | RACCORDO | RACCORD | STUTZEN | CONNECTION | RACOR |
| 19 | 8 24076 | mt. 0,4 | TUBO | TUBE | SCHLAUCH | TUBE | TUBO |
| 20 | 8 38036 | 4 | RIVETTO M6 | RIVET | NIET | RIVET | REMACHE |
| 21 | 8 40404 | 1 | RACCORDO | RACCORD | STUTZEN | CONNECTION | RACOR |
| 23 | 8 14271 | 1 | DISTANZIALE | ENTRETOISE | DISTANZSTUECK | SPACER | ESPACIADOR |
| 24 | 8 35048 | 1 | PORTA MOTORE | PORTE-MOTEUR | MOTORTRAEGER | ENGINE HOLDER | PORTA MOTOR |
| 25 | | 4 | RONDELLA Ø 6 | RONDELLE | SCHEIBE | WASHER | ARANDELA |
| 26 | | 3 | VITE M6 x 10 | VIS | SCHRAUBE | SCREW | TORNILLO |
| 27 | | 2 | DADO M6 | ECROU | MUTTER | NUT | TUERCA |
| 28 | | 2 | VITE M6 x 10 | VIS | SCHRAUBE | SCREW | TORNILLO |
| 29 | | 2 | VITE M6 x 10 | VIS | SCHRAUBE | SCREW | TORNILLO |
| 30 | | 4 | VITE 4,8 x 15 | VIS | SCHRAUBE | SCREW | TORNILLO |
| 31 | | 4 | VITE M6 x 10 | VIS | SCHRAUBE | SCREW | TORNILLO |
| 32 | 8 17107 | 1 | ADESIVO | DECALCOMANIE | ABZIEHBILD | LABEL | ADHESIVO |





| POS. | N°CODICE | Q | DESCRIZIONE | DESIGNATION | BENENNUNG | DESCRIPTION | DENOMINACIONES |
|------|----------|---|----------------|--------------------|-------------------|------------------|-------------------|
| 1 | 8 39531 | 2 | CAPPUCCIO | CAPUCHON | SCHUTZKAPPE | HOOD | CAPUCHON |
| 2 | 8 39528 | 1 | MORSETTIERA | PLAQUE DE JONCTION | KLEMMLEISTE | CONNECTION BLOCK | CAJA DE CONTACTOS |
| 3 | 8 17350 | 3 | ADESIVO | DECALCOMANIE | ABZIEHBILD | LABEL | ADHESIVO |
| 4 | | 1 | VITE M4 x 10 | VIS | SCHRAUBE | SCREW | TORNILLO |
| 5 | 8 39524 | 1 | KIT CAVI | KIT CABLES | KIT ELEKTROKABELN | CABLES KIT | KIT CABLES |
| 6 | 8 39533 | 1 | ANTIDISTURBO | ANTI-BRUIT | ENTSTOERUNG | ANTI DISTURBER | ANTI-DISTURBIO |
| 7 | 8 40403 | 1 | PRESSOSTATO | PRESSOSTAT | DRUCKMESSER | PRESSURE SWITCH | PRESOSTATO |
| 8 | 8 16182 | 1 | PANNELLO | PANNEAU | VERKLEIDUNG | PANEL | PANEL |
| 9 | 8 17327 | 1 | GUARNIZIONE | JOINT | DICHTUNG | SEAL | JUNTA |
| 10 | 8 17336 | 1 | TARGA | DECALCOMANIE | ABZIEHBILD | DECAL | CALCOMANIA |
| 11 | 8 39530 | 1 | SPIA | LAMPTEMOIN | KONTROLLAMPE | WARNING LIGHT | SENAL LUMINOSA |
| 12 | 8 39526 | 1 | SPIA | LAMPTEMOIN | KONTROLLAMPE | WARNING LIGHT | SENAL LUMINOSA |
| 13 | 8 40400 | 1 | VUOTOMETRO | VACUOMETRE | VAKUUMMETER | VAUCOUMETER | VACUOMETRO |
| 14 | 8 39532 | 1 | TAPPO | BOUCHON | STOPFEN | PLUG | TAPON |
| 15 | 8 39525 | 2 | INTERRUTTORE | INTERRUPTEUR | SCHALTER | SWITCH | INTERRUPTOR |
| 16 | 8 39527 | 1 | PRESA | PRISE | PRESSE | SOCKET | ENCHUFE |
| 17 | 8 39529 | 1 | MORSETTO | BORNE | KLEMME | CLAMP | REGLER |
| 18 | | 2 | VITE 3,9 x 9,5 | VIS | SCHRAUBE | SCREW | TORNILLO |
| 19 | | 2 | RONDELLA Ø 4 | RONDELLE | SCHEIBE | WASHER | ARANDELA |
| 20 | | 1 | RONDELLA Ø 4 | RONDELLE | SCHEIBE | WASHER | ARANDELA |
| 21 | | 1 | DADO M4 | ECROU | MUTTER | NUT | TUERCA |
| 22 | | 2 | DADO M5 | ECROU | MUTTER | NUT | TUERCA |
| 23 | | 1 | RONDELLA Ø 5 | RONDELLE | SCHEIBE | WASHER | ARANDELA |
| 24 | | 1 | RONDELLA Ø 5 | RONDELLE | SCHEIBE | WASHER | ARANDELA |
| 25 | | 1 | DADO M5 | ECROU | MUTTER | NUT | TUERCA |
| 26 | | 1 | VITE M5 x 25 | VIS | SCHRAUBE | SCREW | TORNILLO |

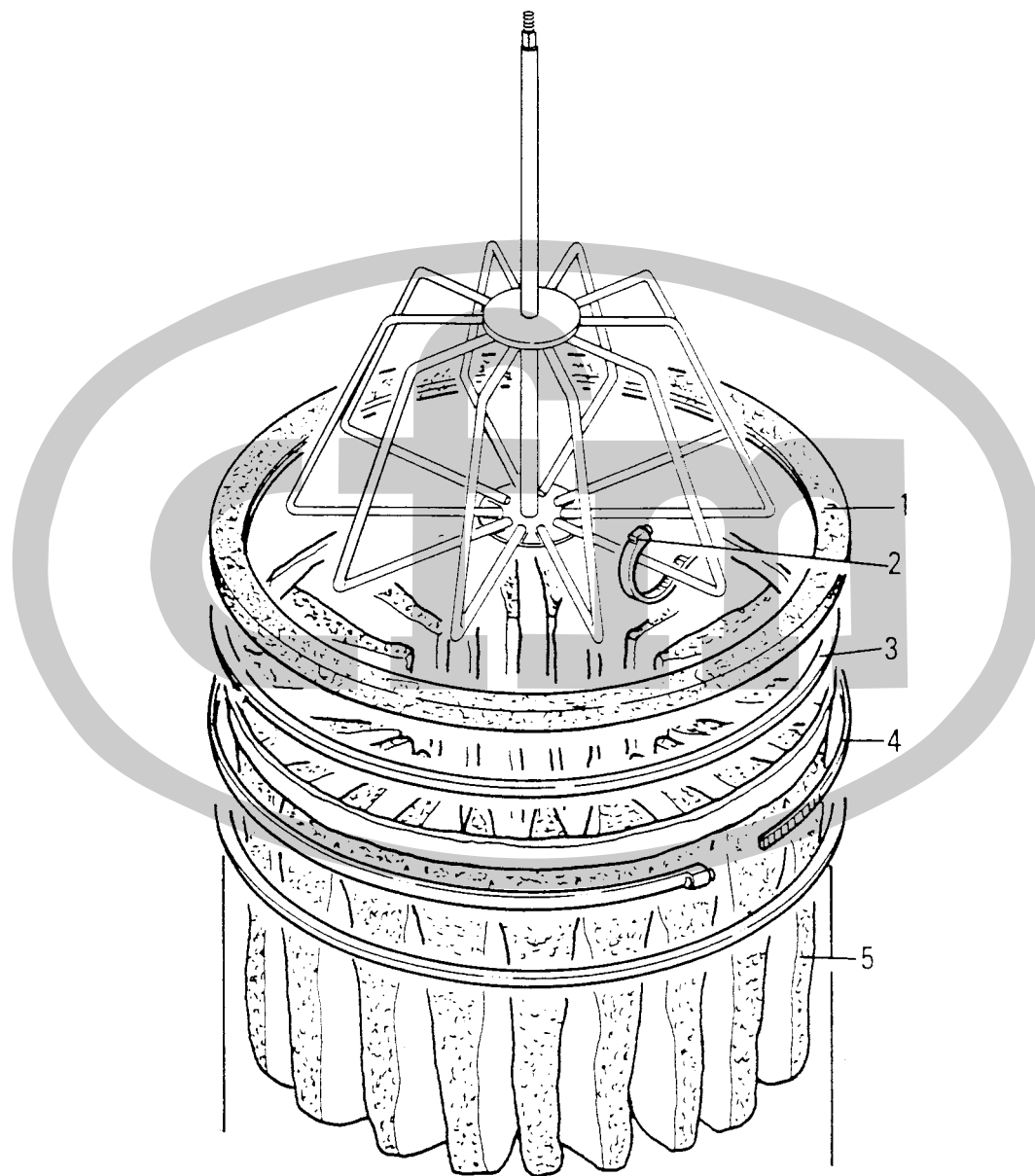




GRUPPO FILTRO - ENSEMBLE FILTRE - FILTEREINHEIT
FILTER GROUP - GRUPO FILTRO

TAV.
5.0

Mod.
127

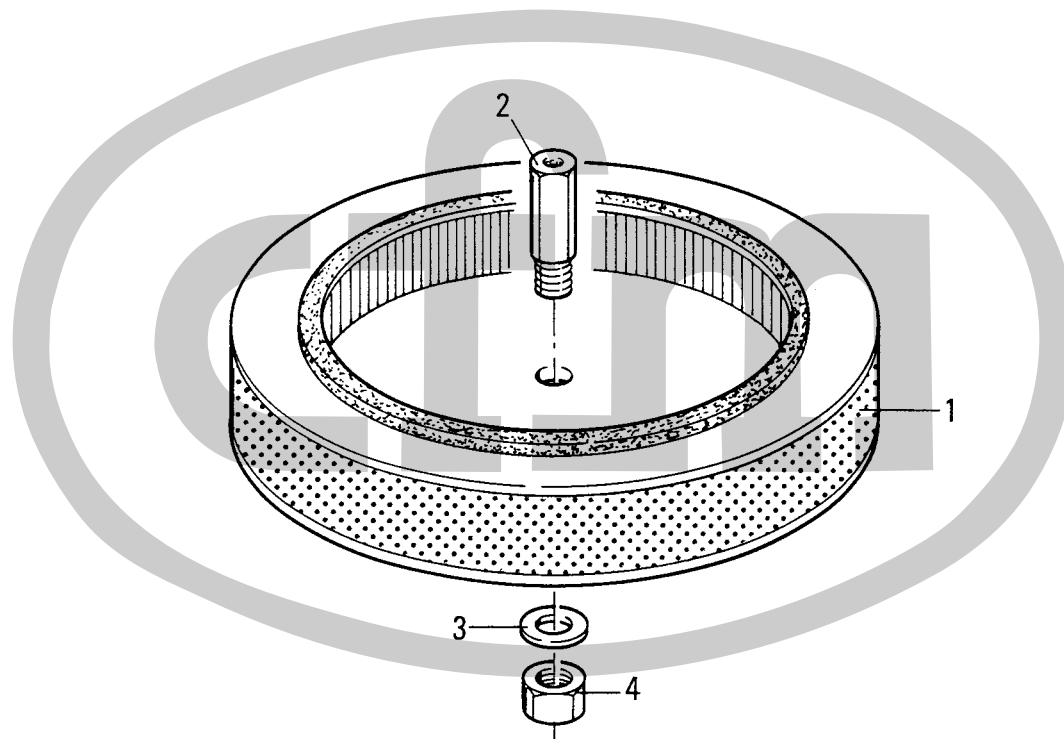




FILTRO ASSOLUTO - *FILTRE ABSOLU* -
ABSOLUTER FILTER - *ABSOLUTE FILTER* - FILTRO ASSOLUTO

TAV.
8.0

Mod.
127



IMPORTANTE

Le informazioni ed i dati contenuti in questa pubblicazione erano esatti ed aggiornati al momento della stampa. E' nostra consuetudine cercare di migliorare il prodotto e di conseguenza alcune modifiche costruttive possono interessare le procedure descritte. Quando si notino delle differenze eliminare ogni dubbio rivolgendosi ad un Centro di vendita e assistenza.

IMPORTANT

Les renseignements et indications contenus dans le présent livret étaient exacts et à jour au moment de l'impression. Dans un souci d'amélioration, nos matériels peuvent avoir bénéficié d'évolutions ou avoir été modifiés. Au cas où vous remarqueriez des différences, veuillez vous adresser à un Centre de vente et Service après-vente pour éliminer toute possibilité de doute.

WICHTIG

Die in vorliegender Veröffentlichung enthaltenen Informationen und Daten waren zur Zeit des Drucklegung korrekt und auf dem neuesten Stand. Da wir unsere Produkte fortwährend verbessern, kann es aufgrund von Konstruktionsänderungen zu Änderungen der beschriebenen Verfahren kommen. Falls Abweichungen auftreten, wenden Sie sich bitte zur Vermeidung von Unklarheiten an ein Verkaufs- und Servicezentrum.

IMPORTANT

Information and data contained in this publication are correct and up to date at the time of printing. The company does, however, continually try to improve the products and such improvements may give rise to structural changes requiring modifications in the above procedures. Should any differences be noted, please contact your nearest sales and assistance center for help in clearing up any possible doubts.

IMPORTANTE

Las informaciones y los datos contenidos en esta publicación son exactos y actualizados hasta el momento de la impresión. Es nuestra norma tratar de mejorar el producto, consecuentemente algunas modificaciones constructivas pueden afectar los procedimientos descritos. Cuando se noten diferencias eliminar cualquier duda dirigiéndose a un Centro de Venta y Asistencia.